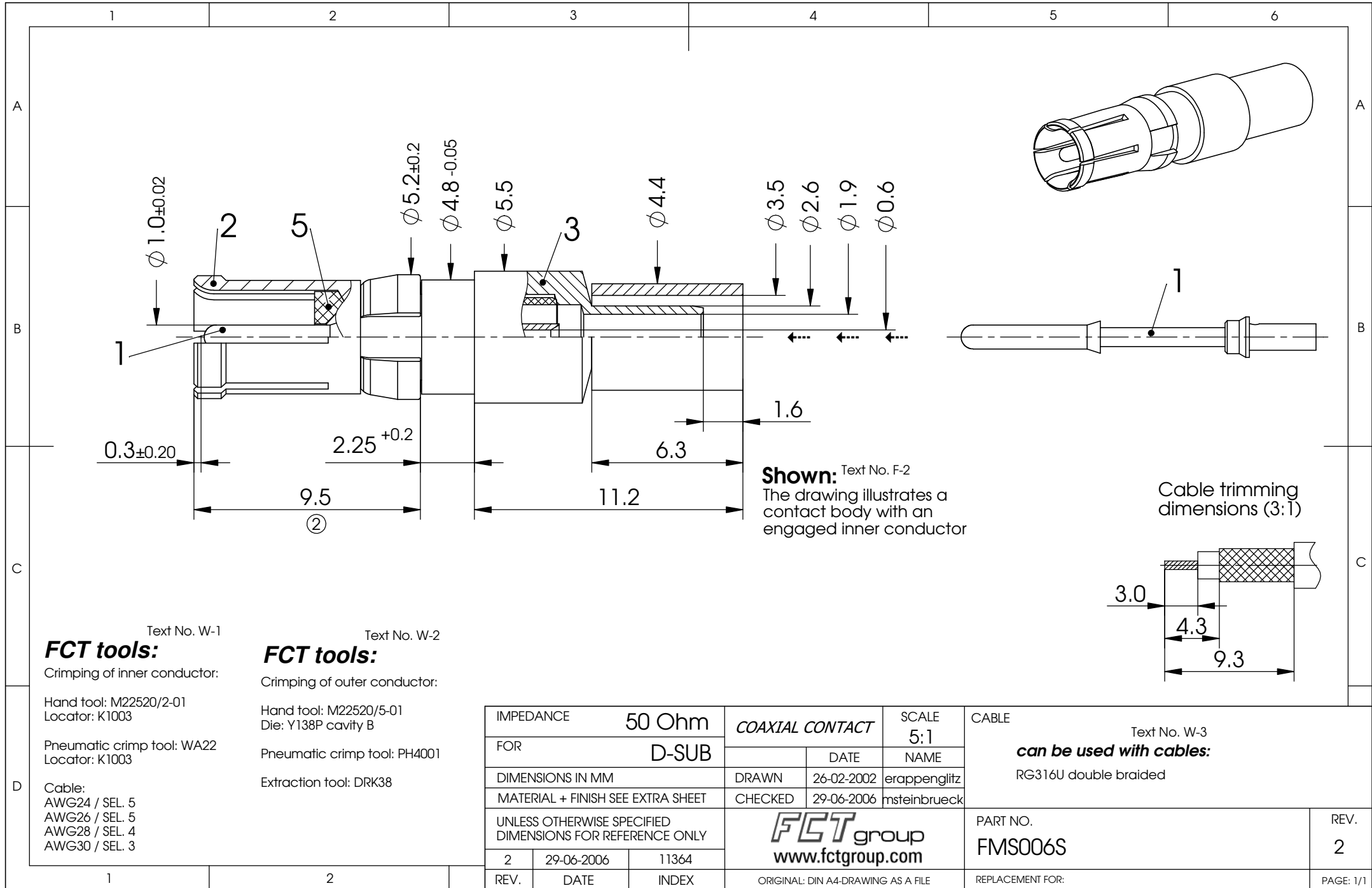


COMMENT:
 ALL RIGHTS ARE RESERVED BY US FOR THIS DRAWING. WITHOUT OUR PRIOR CONSENT,
 IT MAY NEITHER BE DUPLICATED NOR MADE AVAILABLE TO A THIRD PARTY,
 AND IT ALSO MAY NOT BE IMPROPERLY USED BY THE RECEIVER, OR A THIRD PARTY.



Text No. W-1
FCT tools:

Crimping of inner conductor:

Hand tool: M22520/2-01
 Locator: K1003

Pneumatic crimp tool: WA22
 Locator: K1003

Cable:
 AWG24 / SEL. 5
 AWG26 / SEL. 5
 AWG28 / SEL. 4
 AWG30 / SEL. 3

Text No. W-2
FCT tools:

Crimping of outer conductor:

Hand tool: M22520/5-01
 Die: Y138P cavity B

Pneumatic crimp tool: PH4001

Extraction tool: DRK38

IMPEDANCE	50 Ohm		SCALE 5:1
FOR	D-SUB		
DIMENSIONS IN MM	DRAWN	26-02-2002	erappenglitz
MATERIAL + FINISH SEE EXTRA SHEET	CHECKED	29-06-2006	msteinbrueck

UNLESS OTHERWISE SPECIFIED DIMENSIONS FOR REFERENCE ONLY		
2	29-06-2006	11364
REV.	DATE	INDEX

COAXIAL CONTACT		SCALE 5:1
DATE	NAME	
DRAWN	26-02-2002	erappenglitz
CHECKED	29-06-2006	msteinbrueck

FCT group
 www.fctgroup.com
 ORIGINAL: DIN A4-DRAWING AS A FILE

CABLE	Text No. W-3
can be used with cables:	
RG316U double braided	

PART NO.	REV.
FMS006S	2
REPLACEMENT FOR:	PAGE: 1/1